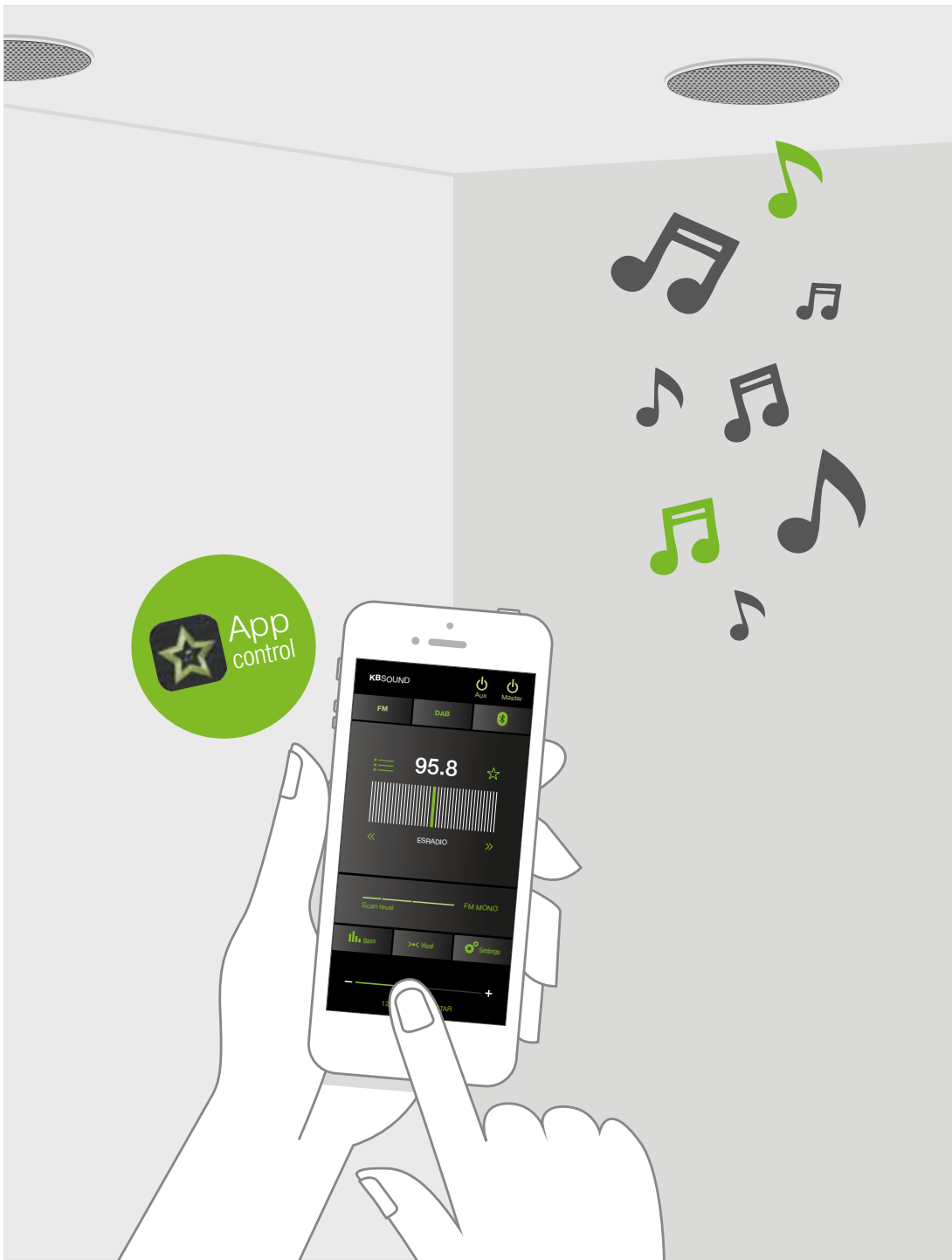
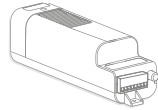


KBSOUND® STAR



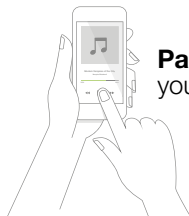
KBSOUND[®] STAR



Install easily



Download
free App



Pair & Play
your music

FCC ID: 2AB6X52791

This device complies with Part 15 of the FCC Rules. Operation is subject to the following two conditions: (1) this device may not cause harmful interference, and (2) this device must accept any interference received, including interference that may cause undesired operation.

FCC Caution:

Changes or modifications not expressly approved by the part responsible for compliance could void the user's authority to operate the equipment.

FCC Statement:

"This equipment has been tested and found to comply with the limits for a Class B digital device, pursuant to part 15 of the FCC Rules. These limits are designed to provide reasonable protection against harmful interference in a residential installation. This equipment generates, uses and can radiate radio frequency energy and, if not installed and used in accordance with the instructions, may cause harmful interference to radio communications. However, there is no guarantee that interference will not occur in a particular installation. If this equipment does cause harmful interference to radio or television reception, which can be determined by turning the equipment off and on, the user is encouraged to try to correct the interference by one or more of the following measures:

- Reorient or relocate the receiving antenna.
- Increase the separation between the equipment and receiver.
- Connect the equipment into an outlet on a circuit different from that to which the receiver is connected.
- Consult the dealer or an experienced radio/TV technician for help."

RSS-Gen & RSS-210 statement:

This device complies with Industry Canada licence-exempt RSS standard(s). Operation is subject to the following two conditions: (1) this device may not cause interference, and (2) this device must accept any interference, including interference that may cause undesired operation of the device.

Le présent appareil est conforme aux CNR d'Industrie Canada applicables aux appareils radio exempts de licence. L'exploitation est autorisée aux deux conditions suivantes:

(1) l'appareil ne doit pas produire de brouillage, et (2) l'utilisateur de l'appareil doit accepter tout brouillage radioélectrique subi, même si le brouillage est susceptible d'en compromettre le fonctionnement.

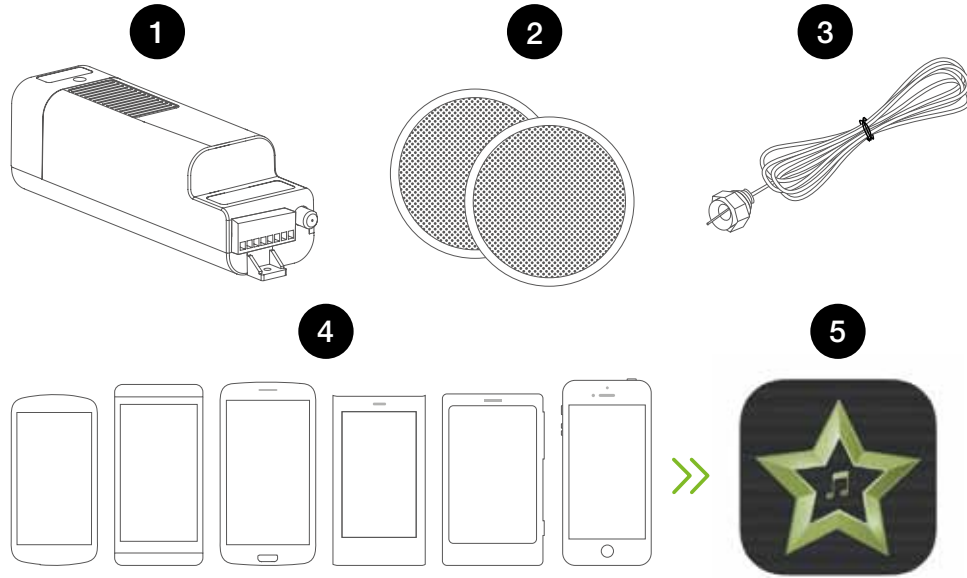
RSS-102 Statement:

This equipment complies with Industry Canada radiation exposure limits set forth for an uncontrolled environment.

Cet équipement est conforme à l'exposition aux rayonnements Industry Canada limites établies pour un environnement non contrôlé.

1. Basic Components & Features	6	7.5 Speaker output (master)	23
2. KBSOUND STAR App Installation	7	7.6 Line output (aux)	24
2.1 iOS Devices	7	7.7 Bluetooth	24
2.2 ANDROID Devices	7	7.8 Remote Control Accessory	25
3. Bluetooth Low Energy Connection (BLE)	8	8. Multi-Room: Bluetooth ID	26
4. Listen FM	10	9. Multi-User	29
5. Listen DAB	11	10. Operating Mode	30
6. Listen Bluetooth Audio Streaming	12	10.1 Volume	30
7. Settings	19	10.2 Notifications and phone calls while operating	31
7.1 Auto power on	20	10.3 Reset to factory defaults	32
7.2 Ideal mode	21	11. Auxiliary Amplifier	33
7.3 Dab	22	12. Remote Control Accessory	34
7.4 Audio Channels	23	13. FAQ's	36

1. Basic Components



1 Bluetooth Audio Receiver+FM Radio+DAB (MASTER)

2 Speakers

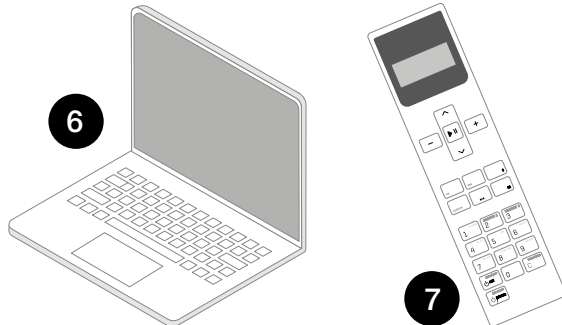
3 FM/DAB Antenna

4 iOS/Android Device

5 KBSOUND STAR App

6 External Bluetooth devices (Computer, Amazon Alexa devices, etc.)

7 Remote Control Accessory (If purchased as an accessory)



The Master (1) is an electronic module installed in the ceiling that allows you to enjoy three music channels: Bluetooth audio streaming, FM Radio and DAB Radio.

The Device (4) is any smartphone or tablet based on iOS or ANDROID with Bluetooth Low Energy (BLE) and the following Bluetooth profiles: A2DP, AVRCP (for sending audio).

The KBSOUND STAR App (5) is the App for managing the Master (1). It can be downloaded from Apple App Store (for iOS Devices) or Google Play Store (for ANDROID Devices). The KBSOUND STAR App is compatible with iOS 7 and higher and ANDROID 4.2 and higher.

The external device (6) is any Bluetooth device (A2DP, AVRCP profiles) from which you wish to stream Audio.

Warning: The KBSOUND STAR App runs on different releases from different operating systems, using different devices from different brands. As a result, its functioning may present some differences between devices.

2. KBSOUND STAR App Installation



2.1 iOS DEVICES



Tap the Apple App Store on the iOS Device to download the KBSOUND STAR App.

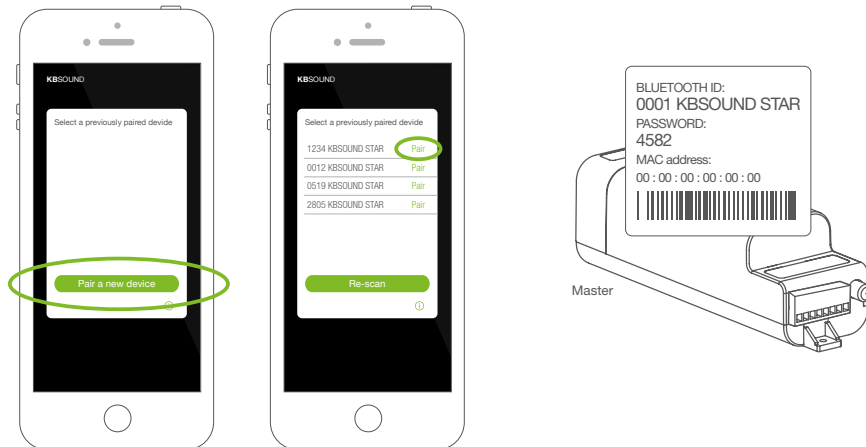
2.2 ANDROID DEVICES



Tap the Google Play Store on the ANDROID Device to download the KBSOUND STAR App.

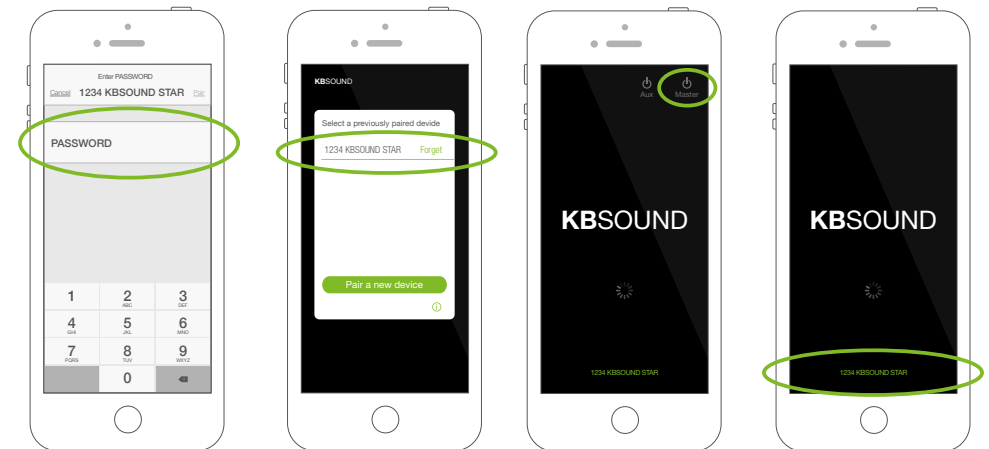
3. Bluetooth Low Energy Connection (BLE)

1. The first time the APP is launched the list of devices is empty. Tap the “Pair a new device” button to search the available MASTERS within range.
2. All the MASTERS within range will appear in the screen. Select the MASTER with which you want to connect.
3. The first time the Device is going to be paired with the Master, the KBSOUND STAR Bluetooth identifier and password will be the factory defaults. This data can be found on the label of the Master. Each Master has a UNIQUE KBSOUND STAR Bluetooth identifier and password, please check that you have a copy of the label with the KBSOUND STAR Bluetooth identifier and password provided on the “Quick reference guide”.



Note: KBSOUND STAR Bluetooth identifier and password can be changed by the user (see chapter 8).
For recovering factory defaults (see chapter 10.6).

4. Introduce the password
5. Now the device has been added to the list of paired devices. Select it to connect.
6. Tap the Master (🔌) button to switch ON/OFF the system.
7. For adding new devices, press the name of the MASTER at the bottom of the screen and follow the same process from the beginning.



Note: only one smartphone can be connected to a MASTER at any time. If a second smartphone wants to connect to the same MASTER, disconnect the first one closing the APP and then connect the second one. Be aware that the first APP is not running in the background.

To clear the pairing between the Device and the Master, open the iOS/ANDROID Bluetooth Settings Menu. Take care that to pair again, you will need the password, so before clearing the pairing, take note of the password.

Warning: some ANDROID's, after clearing the pairing, does not clear all of their internal data and to pair again will require resetting the Master to factory defaults (see chapter 10.6), which means that all the Devices paired will be deleted and they will have to be paired again.

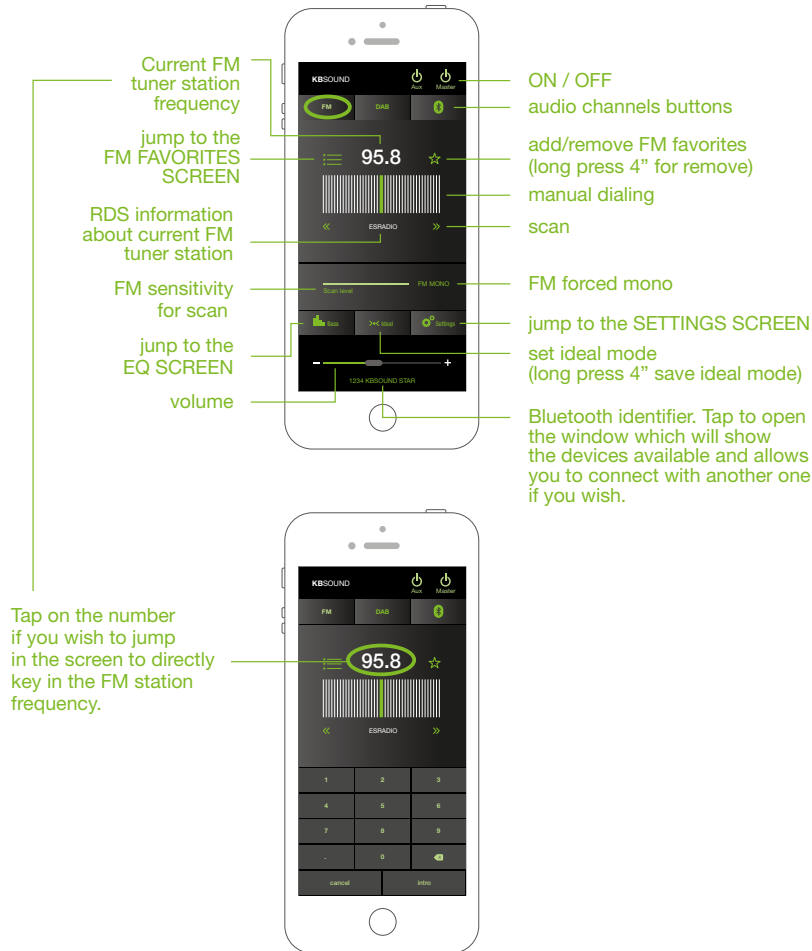
Tested with:

GOOGLE NEXUS 5 / ANDROID 5.0.1

AMSUNG GALAXY ALPHA / ANDROID 4.4.4

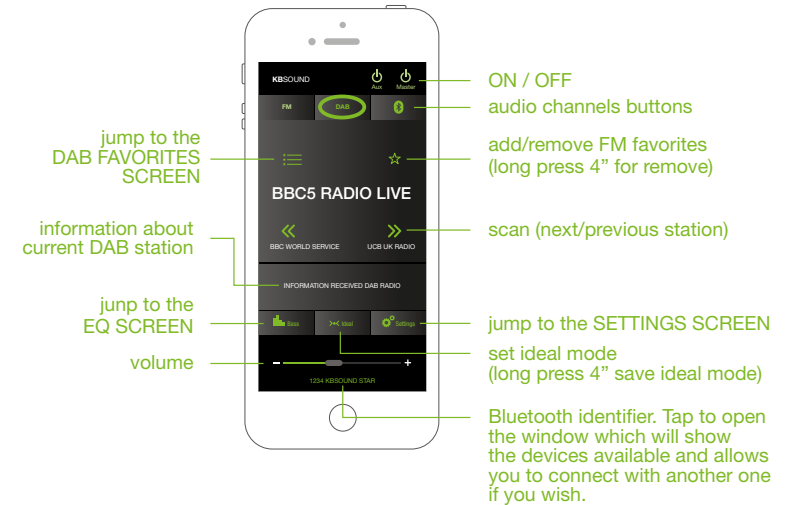
4. Listen FM

Turn on the MASTER and select the FM audio channel.



5. Listen DAB

Turn on the MASTER and select the DAB audio channel.







The App in each smartphone allows you to store its own list of FM favorites and its own list of DAB favorites. These lists are managed managed only by the App in each smartphone, never using the Remote Control Accessory. (See chapter 12).

However, the MASTER unit can store a (unique) list of 10 FM memories and a (unique) list of DAB memories. Both of these lists are managed only by the Remote Control Accessory.

6. Listen Bluetooth Audio Streaming

Turn on the MASTER and select the Bluetooth audio channel.



-  - No BT audio device connected (A2DP)
-  - BT audio device connected (A2DP)
-  - (flashing) Waiting for pairing and connecting with BT audio device (A2DP)
-  - BT audio device streaming (A2DP)

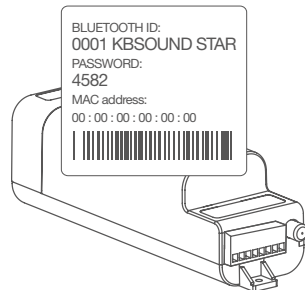
flashing to indicate that the BT AUDIO DEVICE must be connected by Bluetooth with the MASTER

Connect the Bluetooth device for streaming (smartphone, computer, Echo Dot, ...) to the MASTER.

6.1 BLUETOOTH PAIRING AND CONNECTION

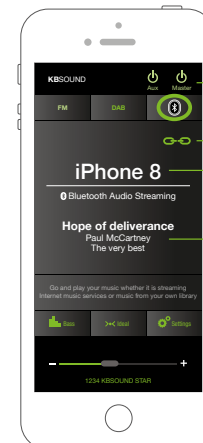
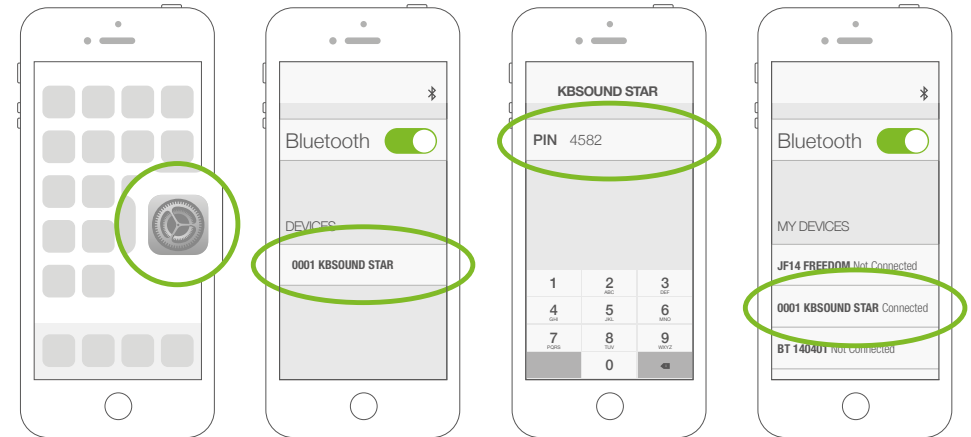
If you wish to stream music **from a smartphone**, go to the smartphone Settings Menu - Bluetooth options and connect with the MASTER (XXXX KBSOUND STAR)

The first time the Device is going to be paired with the Master, the KBSOUND STAR Bluetooth identifier and password will be the factory defaults. This data can be found on the label of the Master.



6.1.1 iOS DEVICES

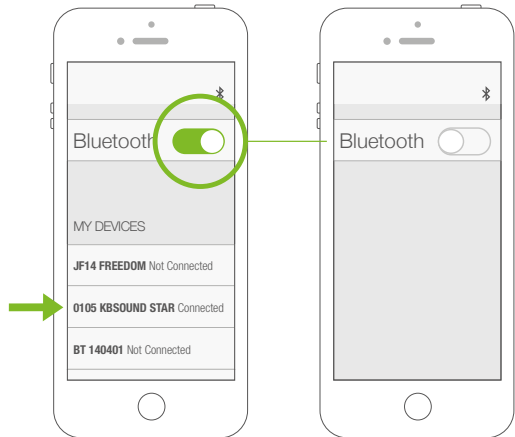
1. Open iOS Bluetooth Settings Menu.
2. Select the Master KBSOUND STAR Bluetooth identifier (e.g. 0001 KBSOUND STAR).
3. Introduce the password (e.g. 4582). Needed only when pairing, not in future connections.
4. Check that the Master (e.g. 0001 KBSOUND STAR) is correctly connected.



- ON / OFF
- disconnect BT Audio device (A2DP)
- name of the device which is connected
- information about the current streaming

6.1.1.2 iOS BLUETOOTH DISCONNECTION

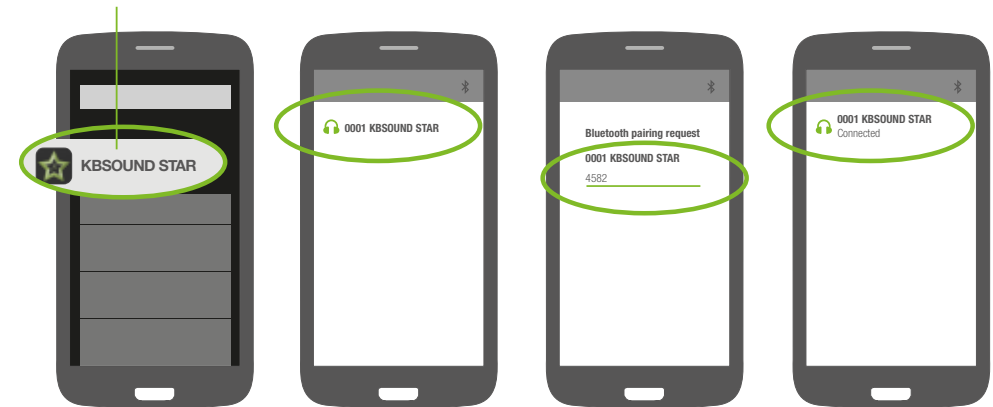
1. Open the iOS Bluetooth Settings Menu.
2. Disconnect Bluetooth (In some iOS versions only total Bluetooth disconnection is available).
3. After disconnection, take note that the music will turn off except if FM is the audio source and "KEEP THE FM ON" is activated (see chapter XX).



6.1.2 ANDROID DEVICES

1. Important: be sure that the KBSOUND STAR App is closed, not running in the background (see chapter 14 FAQ's).
2. Open ANDROID Bluetooth Settings Menu.
3. Select the Master. (e.g. 0001 KBSOUND STAR).
4. Introduce the password (e.g. 4582). Needed only when pairing, not in future connections.
5. Check that the Master (e.g. 0001 KBSOUND STAR) is correctly connected.

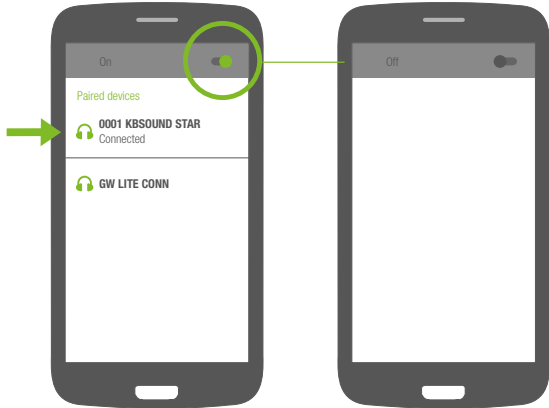
if KBSOUND STAR App is running in background, close it.



Note: the above process is just an example (GOOGLE NEXUS 5 / ANDROID 5.0.1) since different Devices have different configurations for different brands, models and versions.

6.1.2.1 ANDROID BLUETOOTH DISCONNECTION

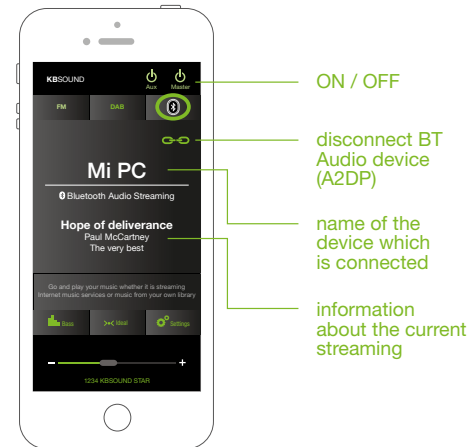
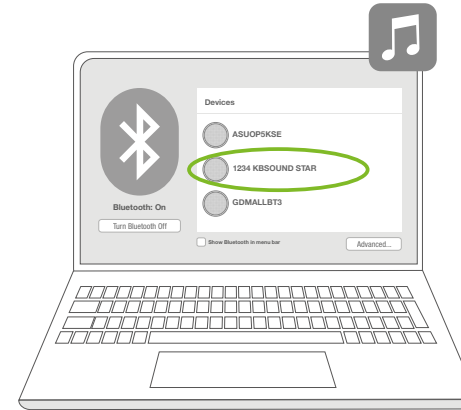
1. Open the ANDROID Bluetooth Settings Menu.
2. Disconnect Bluetooth. Total Bluetooth disconnection is advisable, although some ANDROID models/versions permit individual disconnections. Take care that individual disconnections sometimes do not disconnect correctly all the Bluetooth profiles. (see chapter XX FAQ's).
3. After disconnection, take note that the music will turn off except if FM is the audio source and "KEEP THE FM ON" is activated. (see chapter XX).



Note: the following process is just an example (GOOGLE NEXUS 5 / ANDROID 5.0.1) since different Devices have different configurations for different brands, models and versions.

6.1.3 COMPUTER

If you wish to stream music **from a computer**, go to the computer Control Panel - Bluetooth options and connect with the MASTER (XXXX KBSOUND STAR)



6.1.4 AMAZON ALEXA DEVICES

If you wish to stream music **from any**, setup the Bluetooth connection with the KBSOUND STAR and say “Alexa, connect with the speaker”.

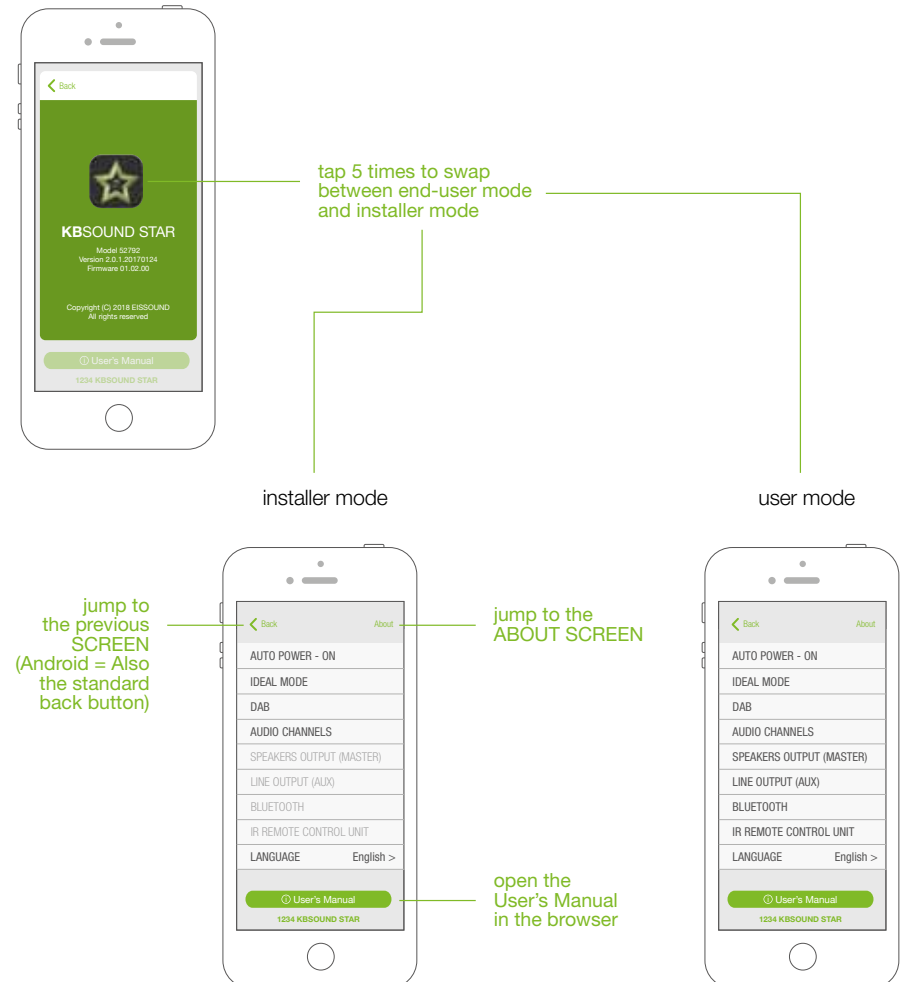
Note: To connect the Amazon Alexa device with the MASTER by Bluetooth, the password of the MASTER must be set to 0000



To change the source of the Bluetooth streaming at any time, disconnect the BT device (A2DP) pressing the disconnect icon in the APP screen, and connect a new one following the same process.

7. Settings

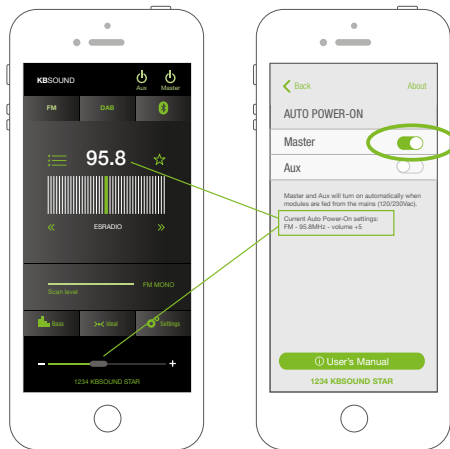
There are two modes in the Settings menu: installer and user modes. In the **user mode** some of the options are locked to avoid changes. In the **installer mode** all the options are available. To change between installer and user mode, go to the About Screen.



7.1 AUTO POWER ON

The Auto Power-On mode is the status (ON/OFF) and audio settings (audio channel and volume) of the MASTER and/or AUX units when they are powered from the mains 230/120V. Factory default is OFF.

To personalize the start-up mode use the Auto-power ON function:



1. choose the desired audio channel (FM, DAB, Bluetooth) and volume for start-up.

2. activate the settings option in the Auto Power-On screen. When you switch ON the MASTER and/or AUX button the audio settings will be updated to the new ones.

If the Auto Power-On is disabled, when the MASTER is powered from the mains, it will start in OFF mode (no audio).

If the Auto Power-On is enabled, when the MASTER is powered from the mains, it will start in ON mode with the audio settings previously defined.

The Auto Power-On settings is a characteristic of the MASTER. It is unique, although it can be enabled or disabled by every APP in every smartphone and by the Remote Control Accessory.

The active audio settings will always be the last defined either by the App or the Remote Control Accessory.

Note: The Auto Power-On setup as MASTER=OFF; AUX=ON will work only while the MASTER is powered from the mains.

7.2 IDEAL MODE

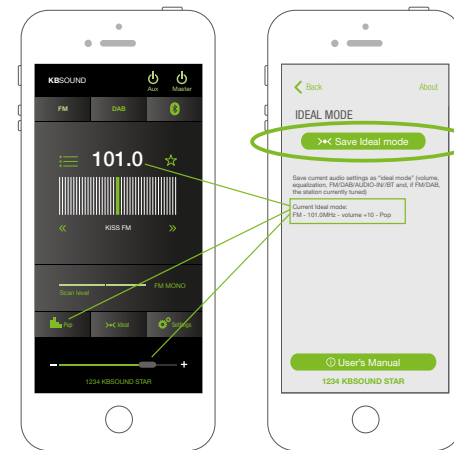
1. Each APP (smartphone) has its own ideal mode for setting the audio channel (FM, DAB, Bluetooth), volume and equalization.

To save the Ideal mode in each smartphone:

Choose the desired audio channel (FM, DAB, Bluetooth), volume and equalization.

Press the Save Ideal mode button in the Settings, Ideal mode screen.

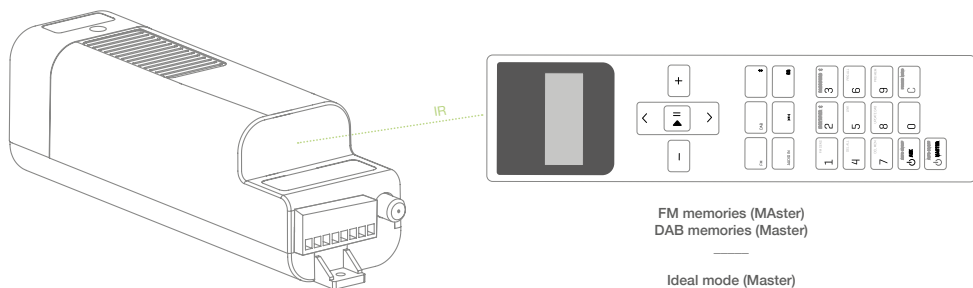
After pressing the button the audio settings will be updated to the new ones.



2. The MASTER unit can store a (unique) ideal mode: Audio channel (FM,DAB, Bluetooth), volume and equalization. This Ideal mode can be personalized and activated only by the Remote Control Accessory, never by the APP.

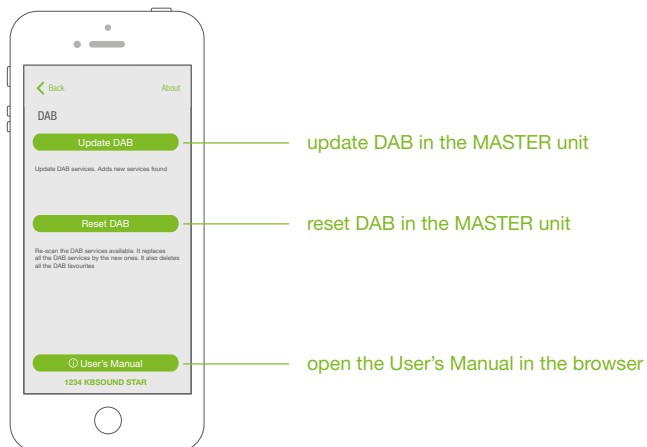
Each smartphone has stored in its APP its own Ideal mode. This Ideal mode can be personalized and activated by each APP in each smartphone.

Master

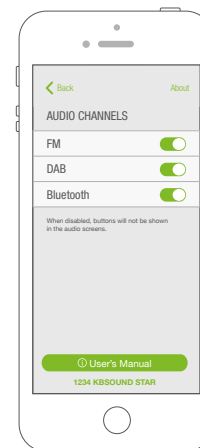


7.3 DAB

When selected de DAB settings button you will be able to update and reset the DAB services.



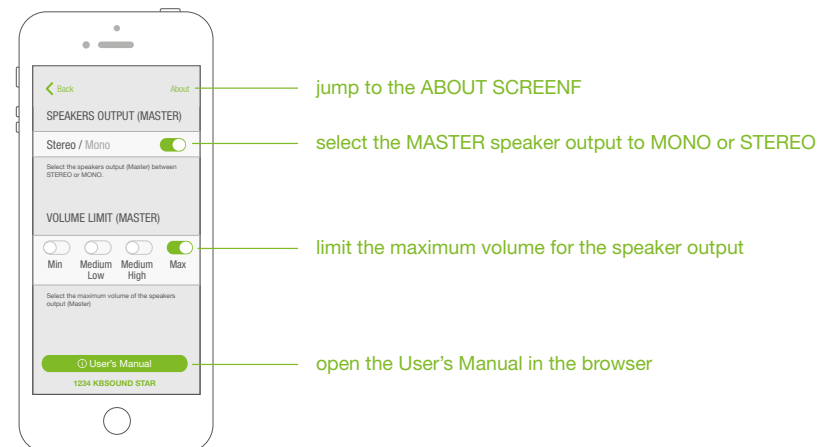
7.4 AUDIO CHANNELS



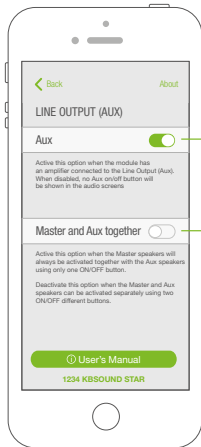
When any of the audio channels are not in use they can be disabled and the button will not appear in the audio screen.

Take note that this selection overrides all a udio channels available in other KBSOUND STAR units managed by this smartphone.

7.5 SPEAKERS OUTPUT (MASTER)



7.6 LINE OUTPUT (AUX)



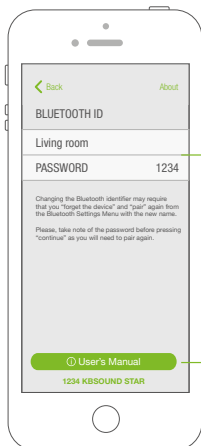
aux button enabled or disabled in the audio screens



enable this option when the user wants to turn on and off the Master and Aux jointly using only one button on the audio screen.

Note: The volume of both Master and Aux will always be the same. Please note that the Bluetooth device only communicates with the Master, so the range must be measured between the location of the user and the Master. It can never be related to the location of the speakers nor the Auxiliary amplifiers.

7.7 BLUETOOTH



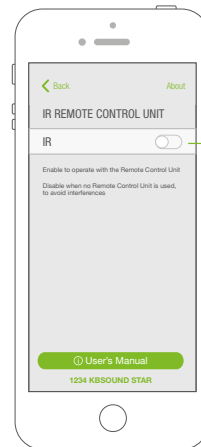
MASTER identifier and password for the Bluetooth connection

open the User's Manual in the browser

Changing the Bluetooth identifier requires that you "forget the device" and "pair" again from the Bluetooth Settings Menu with the new name.

Please take note of the password before pressing "continue" as you will need it to pair again. (See chapter 8)

7.8 REMOTE CONTROL ACCESSORY



The Remote Control Accessory can operate simultaneously with the App. To enable this option you need to activate the Master IR receiver.

enable/disable the MASTER IR receiver to be able to operate with the REMOTE CONTROL Accessory

See chapter 12 for more information when operating with the Remote Control.

7.9 LANGUAGES

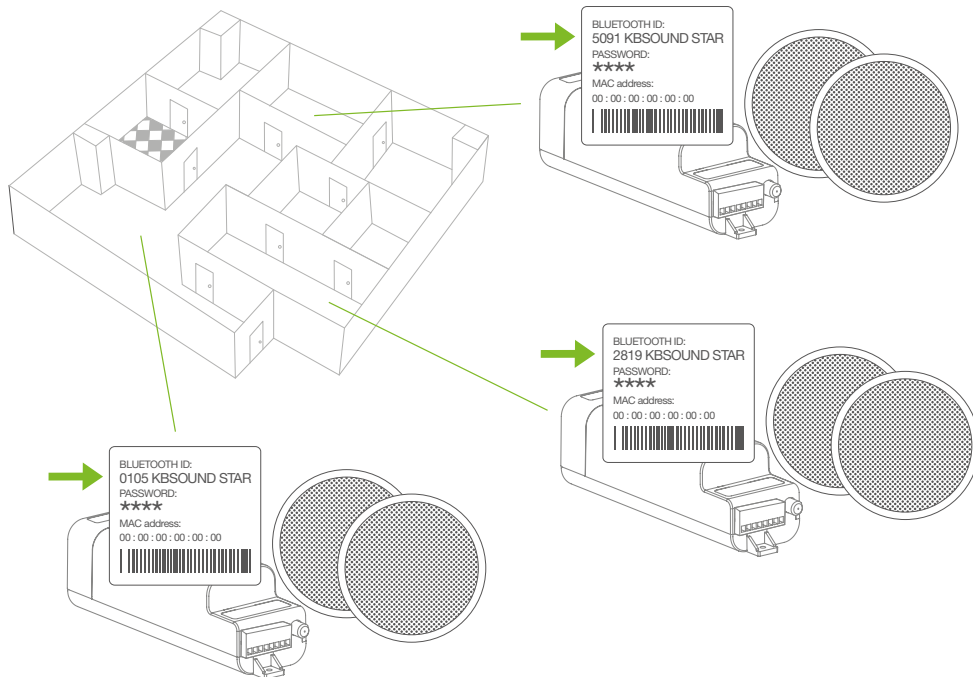
Falta que me envíes la imagen que va en este apartado

8. Multiroom: Bluetooth ID

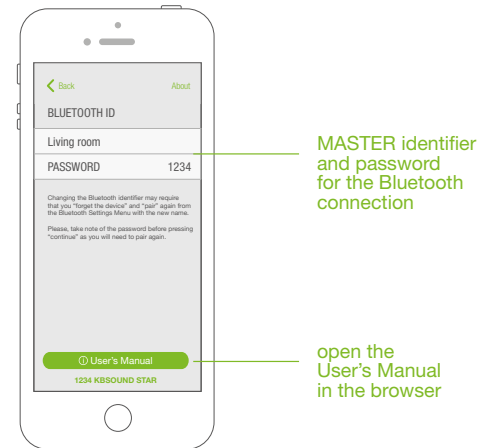
Many Masters can be installed in the same home. Each one will have a unique KBSOUND STAR Bluetooth identifier and password.

The default factory Bluetooth identifier for each Master is XXXX KBSOUND STAR where XXXX is a number between 0000 and 9999. The default password for each Master is a 4-digit number between 0000 and 9999 (different from the KBSOUND STAR Bluetooth identifier). This data can be found on the label of the Master and the label provided with the “Quick reference guide”.

When more than one Master is installed in the same home, it is convenient to rename the KBSOUND STAR Bluetooth identifiers making daily operation more friendly.

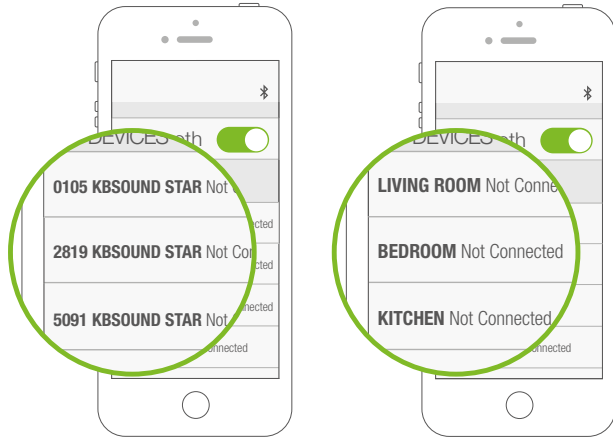


To personalize the KBSOUND STAR Bluetooth identifier and password open the Bluetooth Zone Naming Screen and edit the identifier and/or the password.



The identifier must be a name containing only letters and numbers. Other symbols are not allowed. It is important to use a name which has a meaning in order to facilitate the identification of each Master. (advice: use names like KITCHEN, LIVING ROOM, BEDROOM, etc.)

Warning: if the Bluetooth identifier and/or password have been forgotten, reset to factory defaults (see chapter 10.6).



Note for ANDROID: in some ANDROID models/versions it is possible to personalize the Bluetooth identifier in the ANDROID Bluetooth settings menu. However the KBSOUND STAR App cannot update the KBSOUND STAR Bluetooth identifier when it has been personalized in that way. For this reason, if the KBSOUND STAR Bluetooth identifier is changed from the ANDROID Bluetooth Settings Menu, take care to use the same name used in the App to avoid confusion.

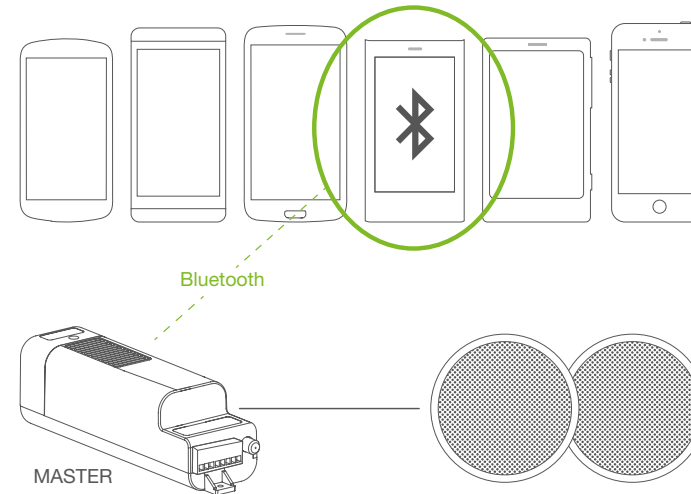
Note: When the KBSOUND STAR Bluetooth identifier has been changed, updating the iOS/ ANDROID Bluetooth Settings Menu of some models/versions may require you to disconnect and connect, while other models/versions need to be un-paired and paired again.

Warning for ANDROID: take care that some ANDROID models/versions require a factory reset when un-paired and paired again. Remember that for un-pairing and pairing again, it is necessary to know the password.

9. Multi-User

Many users can be paired. However, only one can be connected. While one user is connected a second user cannot connect with the same Master until the first user disconnects his device. (See chapters 3.1 for Bluetooth Low Energy Connection and chapters 6.1.1 and 6.1.2 for Bluetooth Audio Streaming)

Many Devices paired
Only one connected



10. Operating Mode

10.1 VOLUME

The KBSOUND STAR App manages two independent volumes: the FM/DAB volume and the Bluetooth volume.

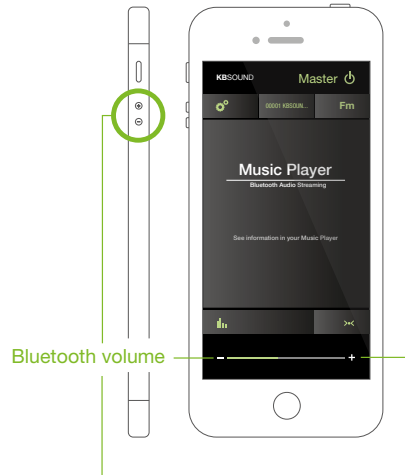
When FM/DAB is selected as music source only the App volume bar will manage the FM/DAB volume.



FM volume

When Bluetooth streaming audio is selected as the music source you may select either the Device volume buttons, the KBSOUND STAR App volume bar or the volume bar of the selected streaming audio source (Music Player, Tune In Radio, Spotify, ...).

If the Bluetooth audio streaming source is a different device (another smartphone, Computer, Amazon Alexa devices, etc ...) the volume is controlled from the device connected.



Bluetooth volume

10.2 NOTIFICATIONS AND PHONE CALLS WHILE OPERATING

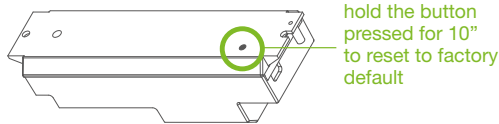
When the Device receives a phone call while a Bluetooth A2DP (audio streaming) is connected with the Master, the ring tone will be heard in the smartphone. The phone call will be managed only from the smartphone and never through the speakers.

When the Device receives a notification (email, sms, WhatsApp, ...) while a Bluetooth device A2DP (audio streaming) is connected with the Master, the smartphone sends this sound to the Bluetooth audio streaming. If Bluetooth audio streaming is selected in the Master as audio source, the notifications will be heard through the speakers. However if the Master is OFF or FM is selected as audio source, the notification will not be heard through the speakers.

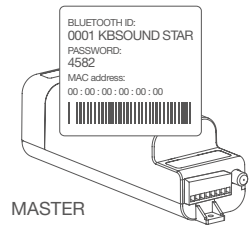
Warning: take note that notifications depend on iOS/ANDROID Notification Settings Menu and also may depend on each particular App Settings (for example Whatsapp Settings).

10.3 RESET TO FACTORY DEFAULT

1. Close the KBSOUND STAR App. (important: not send it to background, close it, see chapter XX).
2. Turn OFF the Bluetooth within the iOS/ANDROID Bluetooth Settings Menu.
3. Reset the Master.



Warning: resetting the Master with factory default will clear all the settings and all the pairings with the different Devices. The KBSOUND STAR Bluetooth identifier and password can be found on the label on the Master.



4. Turn ON the Bluetooth within the iOS/ANDROID Bluetooth Settings Menu.
5. Pair and connect (see chapter 3).

11. Auxiliary Amplifier Option

The Master module has a line output (aux) where amplifiers can be connected.

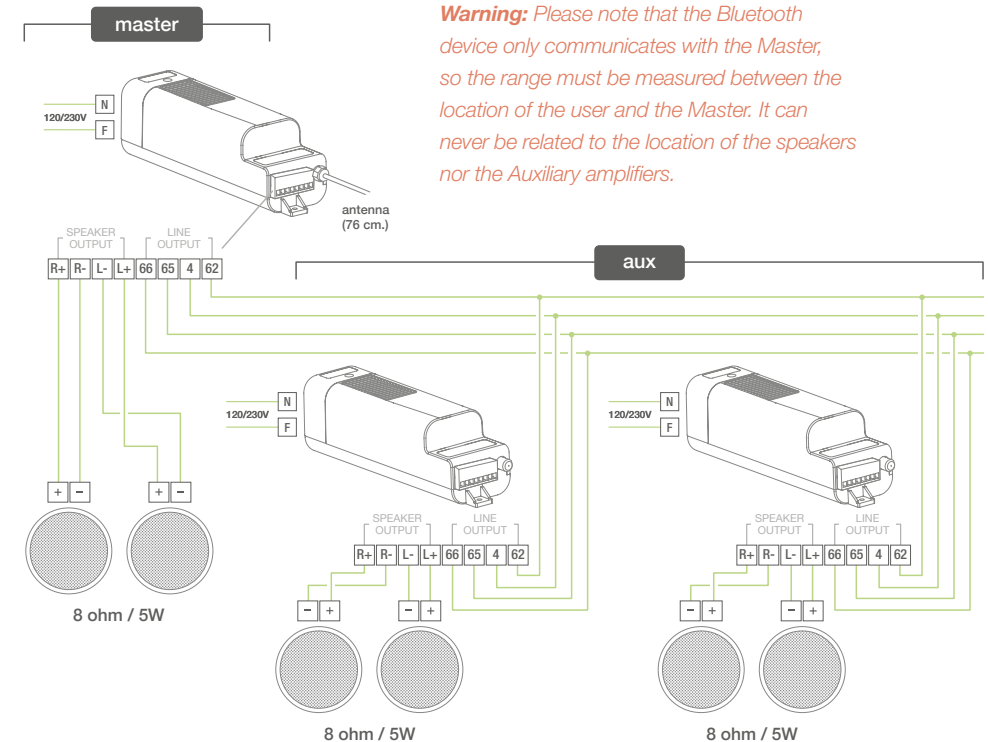
It is necessary to use the Auxiliary Amplifier (ref. 13204) to expand the system to a maximum of 4 amplifiers. Auxiliary and Master can be turned ON jointly or separately using the settings menu (see chapter 7.6).

The volume of both Master and Auxiliary is controlled simultaneously through the App volume bar.



If necessary you can regulate the sound output level of the amplifiers by setting the volume limitation switches at the time of installation.

Warning: Please note that the Bluetooth device only communicates with the Master, so the range must be measured between the location of the user and the Master. It can never be related to the location of the speakers nor the Auxiliary amplifiers.



12. Technical Specifications

12.1 MASTER

52791	MIN	NORMAL	MAX		COMMENTS
Measurements		200x53x56		mm	
Voltage	85		264	Vac	50/60Hz, terminal F,N
Frequency	47		63	Hz	50/60Hz, terminal F,N
Consumption demand		10	60	W	terminals F,N
Output signal			2,5	W	terminals L,R over 16ohm
			5	W	terminals L,R over 8ohm
			10	W	terminals L,R over 4ohm
Passband	20		20.000	Hz	
Aux.amplifier switch on signal		12	14	Vdc	terminals 62, 4
			220	mA	
Distortion		0,3		%	
Crosstalk	68	85		dB	
FM Frequency range	87,6		108.0	MHz	
FM antenna impedance		75		ohms	RF connector
FM antenna sensitivity		1,7	3,5	uV	
FM tuner distortion		0,1	0,5	%	
Bluetooth spec.		Class2 BT3.0 + EDR A2DP 1.0 AVRCP 1.0 SPP 1.0			
Wireless transceiver		2,4		GHz	
RF transmission power		-10		dBm	
RF antenna		internal			
Bluetooth range			10	m	

12.2 AMPLIFIER

13204	MIN	NORMAL	MAX		COMMENTS
Measurements		200x53x56		mm	
Voltage	85		264	Vac	50/60Hz, terminal F,N
Frequency	47		63	Hz	50/60Hz, terminal F,N
Consumption demand		10	60	W	terminals F,N
Output signal			2,5	W	terminals L,R (16ohm)
			5	W	terminals L,R (8ohm)
			10	W	terminals L,R (4ohm)
Passband	20		20.000	Hz	
Auto-power-on level	10		20	Vdc	terminals 62, 4
Input Signal	0		3,5	Vrms	terminals 65, 66
Distortion		0,3		%	
Crosstalk	68	85		dB	

13. FAQ's

13.1 EQUALIZATION

The equalization mode is stored in the Master. As a result, the equalization mode is the last one set by the most recent user.

13.2 BLUETOOTH NAME AND PASSWORD

We have included in the "Quick Reference Guide" a copy of the label used on the Master with the KBSOUND STAR Bluetooth identifier and password.

13.3 FM RECEPTION

This product has been designed and tested to provide reasonable protection against harmful interference in residential installation.

Improving the FM reception: extend the aerial antenna wire and adjust the angle for best reception. Be sure to locate it as far as possible from any sources of electrical noise such as halogen lamps, HVAC, fluorescent bulbs, etc.

13.4 RDS INFORMATION RECEPTION

The App is prepared to receive RDS information and show it beside the frequency. However some FM stations do not send any RDS information. Also, if FM reception is not good, although sound can be heard, RDS information may not be well received. In these cases, no RDS information is shown. To improve it, be sure that the FM station is sending an FM signal and use an FM antenna.

13.5 RECEIVE A CALL WHEN LISTENING FM/DAB

Take note that the FM/DAB is not paused when the Device receive a call.

13.6 POOR BT SIGNAL

Frequent cuts in BT signal can be originated by a obstacles between the device and the Master.

To avoid these issues, distance the Master from another RF source such as other Bluetooth or Wi-fi equipment. Take care that the Bluetooth connection management is done by the Device Operating System as the Master has no control over this process.

13.7 BLUETOOTH PAIRING FAILURES

When an incorrect password is introduced and the correct password is immediately reintroduced, sometimes the device will not connect. To fix it, reset the Master and introduce the correct password again.

13.8 ISSUES WHEN CONNECTING BLUETOOTH

Sometimes a Device previously paired can request the password again to reconnect with the Master. This is originated by the Operating System inside the Device and the Master has no control over this. Re-entering the password will allow you to continue managing the Device correctly.

13.9 BLUETOOTH CONNECTION FAILURES

When the App initiates you may find that it freezes in a “loading” status . In addition, the App may lose its connection with the Master and cease to function. Please note that the Bluetooth connection is managed by the Operating System (iOS or ANDROID) in the Device and the Master has no control over this process. Furthermore, the device is managing many processes at the same time (phone, wi-fi, bluetooth, internal processes) and they can interfere with each other.

Should this occur, close the App and reopen it again. This will allow the management process to initiate once more.

13.10 BLUETOOTH AUDIO STREAMING (A2DP) DISCONNECTION

Some ANDROID models/versions disconnect Bluetooth partially. As the disconnection is incomplete, some malfunctioning can occur because the Device is connected with different profiles from different devices. For fixing this issue, turn OFF the Bluetooth in the Device, turn ON and connect again with the Master. If the issue is not fixed, reset to factory defaults (see chapter XX).

Sometimes a similar issue can be present in iOS devices, when the Bluetooth audio streaming (A2DP profile) is forced to be re-directed to a different device from KBSOUND using the AIRPLAY option. To fix this issue, turn OFF the Bluetooth, turn ON and connect again with the Master. If the issue is not fixed, reset to factory defaults (see chapter XX).

13.11 BLUETOOTH AUDIO STREAMING (A2DP) RE-CONNECTION

When the Device has lost the Bluetooth range the re-connection is automatic if it is recovered before 60”. If it is out of range for more than 60”, then the re-connection has to be done manually (see chapter XX).

When an iOS Device has been disconnected manually by the user (see chapter XX), re-connecting again must be done manually.

Some ANDROID models/versions have an automatic re-connection as part of their internal operating mode. Sometimes it can be enabled and disabled in the ANDROID Bluetooth Settings Menu. Also there are many “gadgets” for ANDROID which control these features and different versions/models can work in different ways.

13.12 MULTI-MASTER CONNECTION RELATED TO BLUETOOTH AUDIO STREAMING PROFILES (A2DP)

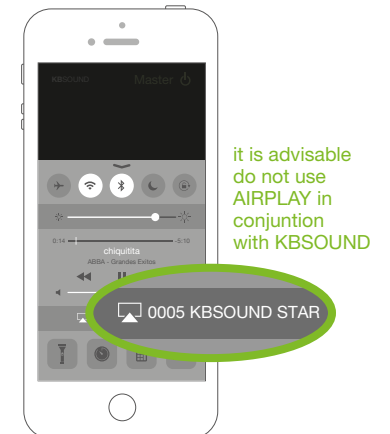
KBSOUND STAR App manages the Bluetooth Low Energy (BLE), AVRCP, A2DP Bluetooth profiles. AVRCP and A2DP profiles are related with the Bluetooth streaming audio, while BLE profile is related to remote control operation.

ANDROID Devices only permit to be connected with one Master by A2DP (audio).When a second Master is going to be connected by A2DP (audio), automatically disconnect the first one.

iOS Devices can be connected simultaneously with more than one Master by A2DP (audio). However the KBSOUND STAR App will receive audio just from one (the first one with which it was connected). It is advisable to be connected by A2DP (audio) with just one Master at any time, since it is the only one that can be operated.

iOS Devices can manage the A2DP Bluetooth profile between several devices using AIRPLAY re-direction.

In these cases close and reopen the App.



13.13 BLUETOOTH AUDIO STREAMING FROM APPS PLAYING IN BACKGROUND

When Bluetooth streaming audio is selected as source of audio, any App sending Bluetooth audio streaming can be used as source of audio: Music Player, Spotify, Tune In Radio, Youtube, ...

This approach is more flexible than integrating the services into the App. As a result, any service will be compatible, not only the services defined in the App. In this way each user can play the music using his favorite player and is not limited to the KBSOUND STAR App.

Take note that some Apps pause the audio when they are in the background and only play audio when they are in the foreground (for example Youtube in iOS).

13.14 WHAT TO DO WHEN PASSWORD IS FORGOTTEN

To pair a new Device it is necessary to know the KBSOUND STAR Bluetooth identifier and the password (see chapter XX).

Both data can be customized (see chapter XX). If they have been changed from the factory defaults and you lose them, the way to recover this information is to connect another Device that has been previously paired. Then open the Bluetooth ID Screen (see chapter XX), and take note of the identifier and password.

If you are using the Remote Control Accessory you can also check the identifier and password (See chapter xxx).

If there is no possibility to know the KBSOUND STAR Bluetooth identifier and password, reset the Master to factory defaults (see chapter XX) and check the information on the label on the Master.

13.15. iOS AND ANDROID MULTITASKING

It is very important to distinguish between App's operating in the background and the App's in the foreground.

Multitasking allows Apps to perform certain tasks in the background while you are using other Apps. The App in the foreground is the App that user can see active in the screen. Simultaneously, other Apps can be operating in background.

When you press the Device HOME button, the App is sent to background. Take note that an App operating in background consumes data and battery.



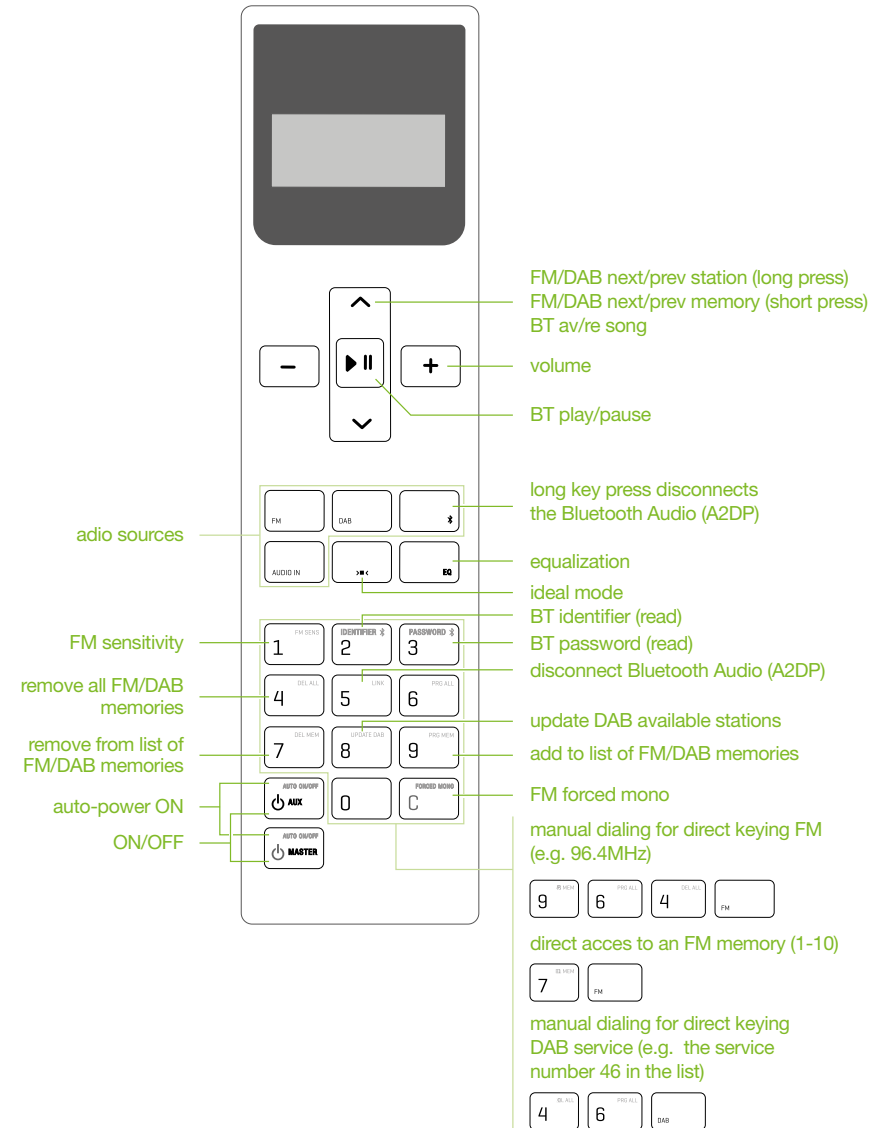
To close the App means that the App is permanently closed and it is not operating in background. The way to close the App can be different for each Device, although the process can be similar. See their user manuals to see how to do it.
















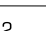


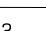


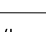







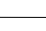
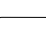



13.16. WHAT TO DO IF THE KBSOUND STAR App IS NOT WORKING

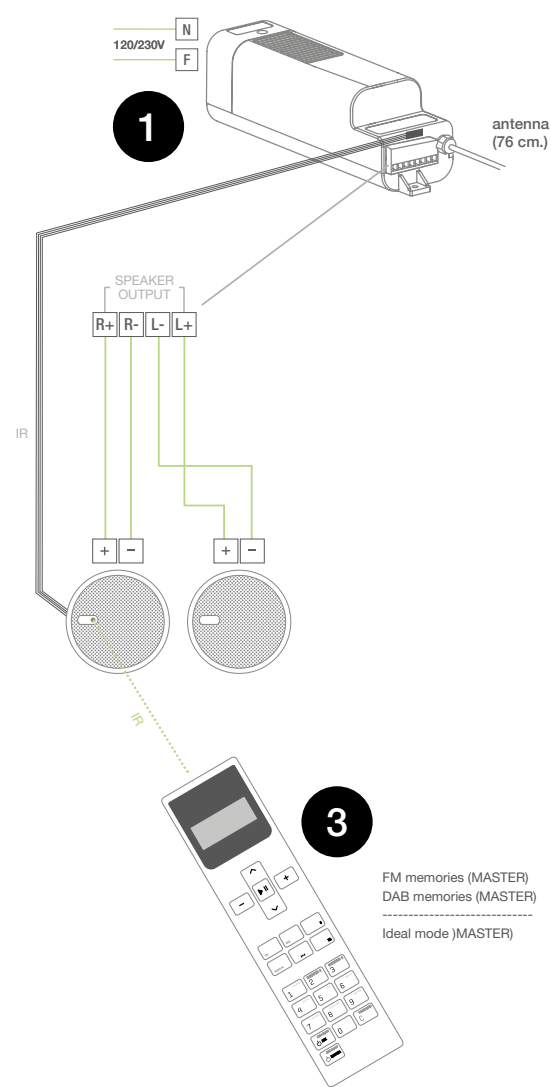
1. Close the KBSOUND STAR App.
(important: not send it to background, close it, [see chapterXX](#))
 2. Turn OFF Bluetooth in the iOS/ANDROID Bluetooth Settings Menu.
 3. Turn ON Bluetooth in the iOS/ANDROID Bluetooth Settings Menu.
 4. Open the KBSOUND STAR App.
- If still not working properly, reset to factory defaults ([see chapter XX](#)).

14. Remote Control Accessory



KBSOUND STAR

ask for FM sensibility	1 	setup current mode as Ideal mode	
setup automatic FM station search sensitivity	1  2 	setup Auto Power ON for Master	
setup automatic FM station search sensitivity	2  1 	setup Auto Power ON for Aux Line Output	
setup automatic FM station search sensitivity	3  1 	setup Master speaker output Level	1  6 
store FM/DAB memory	9 	setup Master speaker output Level	2  6 
delete FM/DAB memory	7 	setup Master speaker output Level	3  6 
delete all FM/DAB memories	4 	setup Master speaker output Level	4  6 
update DAB available stations	8 	setup Master speaker output Mono	1 
reset DAB available stations	0  8 	setup Master speaker output Stereo	2 
FM Forced Mono	C 	version	3  0 
disconnect Bluetooth audio	5 		
ask for Bluetooth identifier	2 		
ask for Bluetooth password	3 		



- 1** MASTER
- 2** AUX
- 3** REMOTE CONTROL UNIT

CENTRAL

Polígono Malpica Calle F Oeste
Grupo de Naves Gregorio Quejido, 87-88
50016 Zaragoza (SPAIN)
Tel.: 34 976 46 55 50
Fax: 34 976 46 55 59
comercial@eissound.com

www.eissound.com



eissound

It's Soundlife!